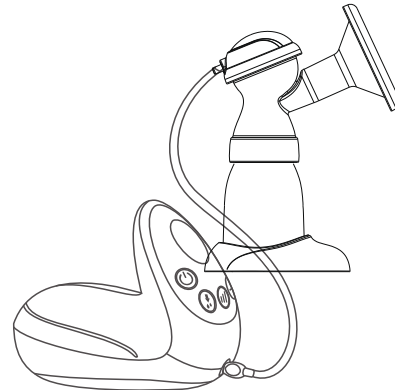


Thank you for Choosing FLO Comfort breast Pump, Model No XN-D209
Flo Comfort is a V.MAX product, guaranteed for 2 years and carefully designed for mothers.

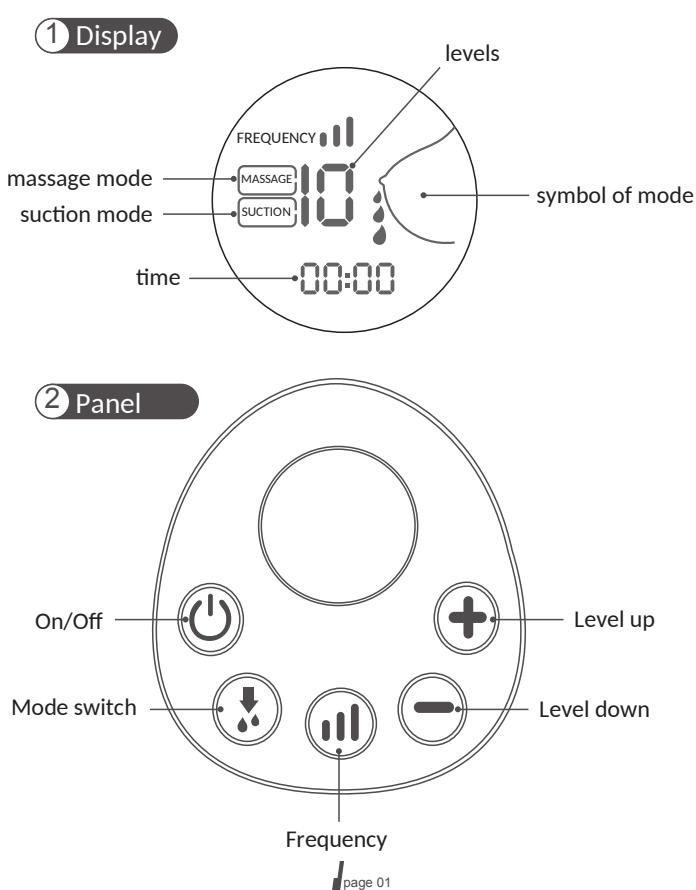
Instruction Manual



XN-D209

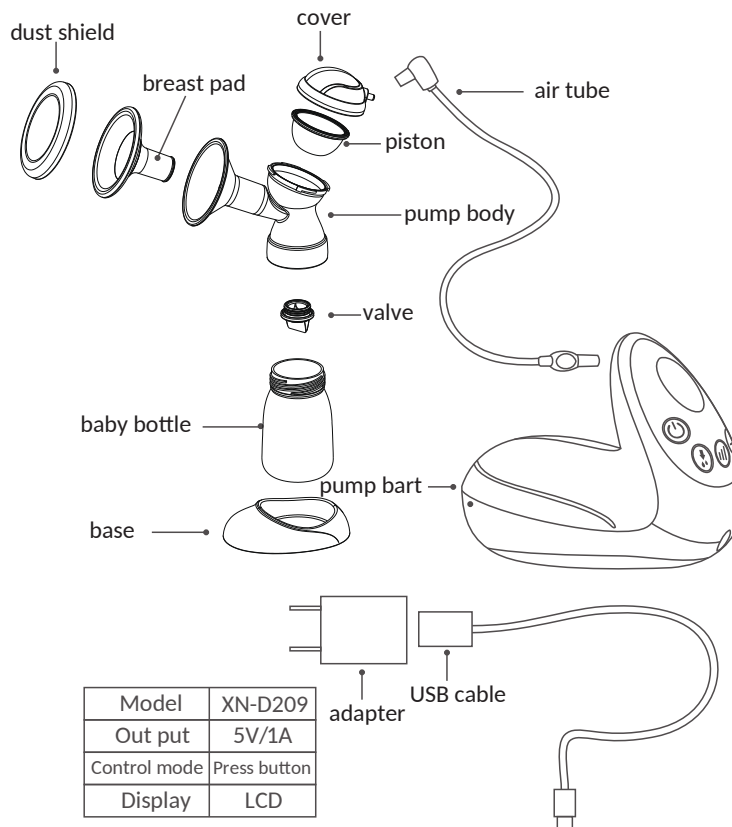
Before using, please read the instruction carefully

Panel and Display



page 01

Bom List



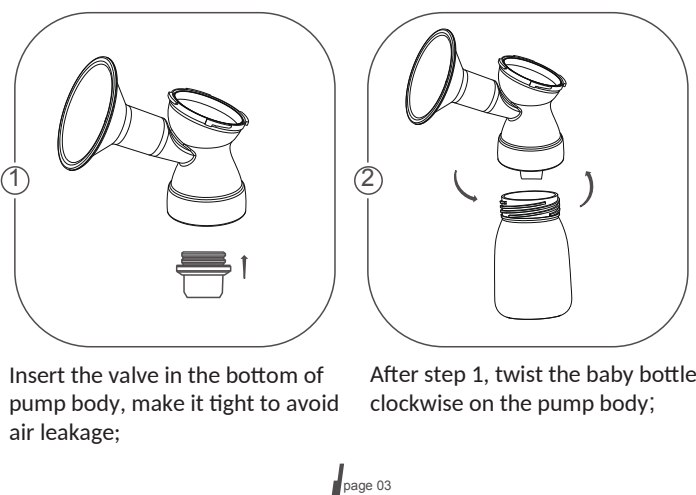
Model	XN-D209
Out put	5V/1A
Control mode	Press button
Display	LCD

page 02

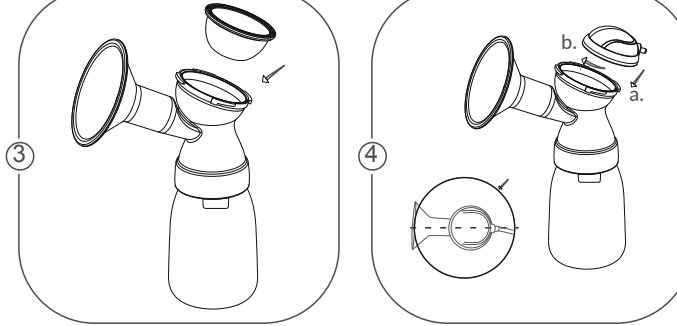
Function

- 1 Message**
There are 10 levels for suction and 3 degrees for frequency. Mothers can find the most suitable suction and frequency for Expression. The suction power range for massage modes is 7-16KPa, frequency range at 70-90 times/min.
- 2 Suction**
There are 15 levels for suction and 3 degrees for frequency. Mothers can find the most suitable suction and frequency. The suction power range is 10-45KPa.

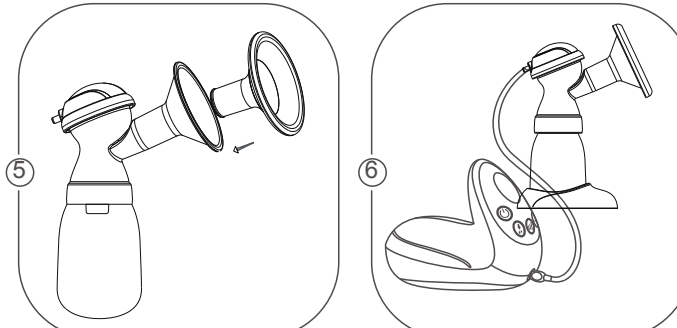
Assemble



page 03



Insert the piston inside the pump body, make sure it fits the edge very well to avoid leakage;
a. Put the cover on top of pump body;
b. Press and twist clockwise to secure the position;



Insert the silicone breast pad as in picture, without gap ;
PS: Cover using the dust shield if you are not using the pump.
page 04

Using Guide

- 1 Message**
Expression:
Women in suckling period can easily extract milk in a few minutes.
Before sucking the breast milk, use the massage mode to stimulate expression, then switch to Suction mode.
Massage mode simulates the teats, fast without causing pain, it induces first milk drops expression easily; Suction mode mimics a baby sucking teats, stronger suction, with high efficiency compared to massage mode, but still in a comfortable manner.



Switch to massage mode, press +, - to adjust suction power 10 levels for massage mode.
Press the frequency button to adjust frequency, there are 3 degrees to choose between.

page 05

- 2 Suction**
Switch to suction mode, press +, - to adjust suction power 15 levels for suction mode.
- 3 Memory**
With memory function, you can keep record of your settings used for the previous session; When you turn on the pump, it will run with the same suction level and frequency settings that were previously used.
Your pump shall remain plugged to keep the settings in its memory.

Clean and Sterilize

The Pump material used is PP and silicone; after use, please disassemble the parts and clean. You should steam the parts or sterilize before use, please make sure the air tube and piston and cover are dry, DO NOT WASH the pump motor with water, it includes electronics. The pump motor can only be cleaned by using a damp towel.

page 06

Trouble Shooting

- 1 No suction**
a. Check the valve, the piston, the cover and the air tube. Be sure that they are well assembled and mounted correctly;
b. Check the parts for any visual damage;
c. Check the power.
- 2 Minimal suction**
1. Check the steps mentioned above in "a."
2. There are 15 levels for suction mode, the max suction power is 45KPa, usually the suction power of a baby is 20-30KPa; We suggest increasing the suction level slowly, the most suitable level is when sucking feels smooth without any pain. This strongest level might not be the ideal one; High suction power may harm the nipple.
- 3 Sucking slowly**
The speed of breast milk draining out is different depending on each person, stronger power doesn't mean higher flow of a milk; Breast structure, patency degree, and even comfort level will affect the flow. Users who use the pump regularly, will become more and more accustomed to the process and will be able to extract milk more smoothly;
Before using the pump, compress the breast with a warm/hot pad, run the massage mode for 5 mins, then switch to suction mode.
- 4 Pain in breast**
If you feel pain, and you are unable to express milk, contact your doctor;
Sucking out the milk completely has a beneficial effect and prevents mastitis.

page 07

Notice

- 1. Make sure the air tube, cover and piston are dry before use;
- 2. Do not cover the air hole on the pump body when using the pump;
- 3. Clean the pump body parts every time after use;
- 4. Do not sterilize the extension air tube, water might get into the pump motor;
- 5. The Pump Motor, Adapter and USB cable should not be cleaned using water; or sterilized; as they are not in contact with breast milk;
- 6. If you use a steam sterilizer, make sure the parts don't touch the heating plate; If you use boiling water to sterilize, make sure the parts don't touch the bottom of the pot.

page 08

Warranty

Thank you for Choosing FLO Comfort breast Pump, Model No XN-D209
Flo Comfort is a V.MAX product, guaranteed for 2 years and carefully designed for mothers.(except failure caused by human mistake or misuse). Please take care of your warranty card. If quality problems, please contact your supplier (Pharmacy, shop, or V.MAX Local distributor).

Distributor in Lebanon:
HOSPISERVICES sari
Ph: 81-666 909
support@hospiservices.com

Supplier or Seller Name and Stamp:

Purchase date: .

page 09